

CAB: 100"W KME PREDATOR LED 10" RR ALUMINUM
ENGINE & TRANS: CUMMINS L9 450 HP/ALLISON 3000 EVSR
AXLES: 22,000# STEERTEK FRONT/27,000# REAR
PUMP: HALE QMAX-150 1500 GPM SINGLE STAGE
WATER TANK: 750 GALLONS POLY
BODY TYPE: 158" 3/16" ALUMINUM
GENERATOR: HARRISON 10 MCR PTO/HYD

THIS DRAWING IS A GENERAL
CONFIGURATION AND MAY NOT
NECESSARILY REFLECT ALL
CONTRACTUAL REQUIREMENTS.
CONTRACT SPECIFICATIONS SHALL
PREVAIL OVER DRAWING.

CUSTOMER APPROVAL:

NAME:

TITLE:

DATE:

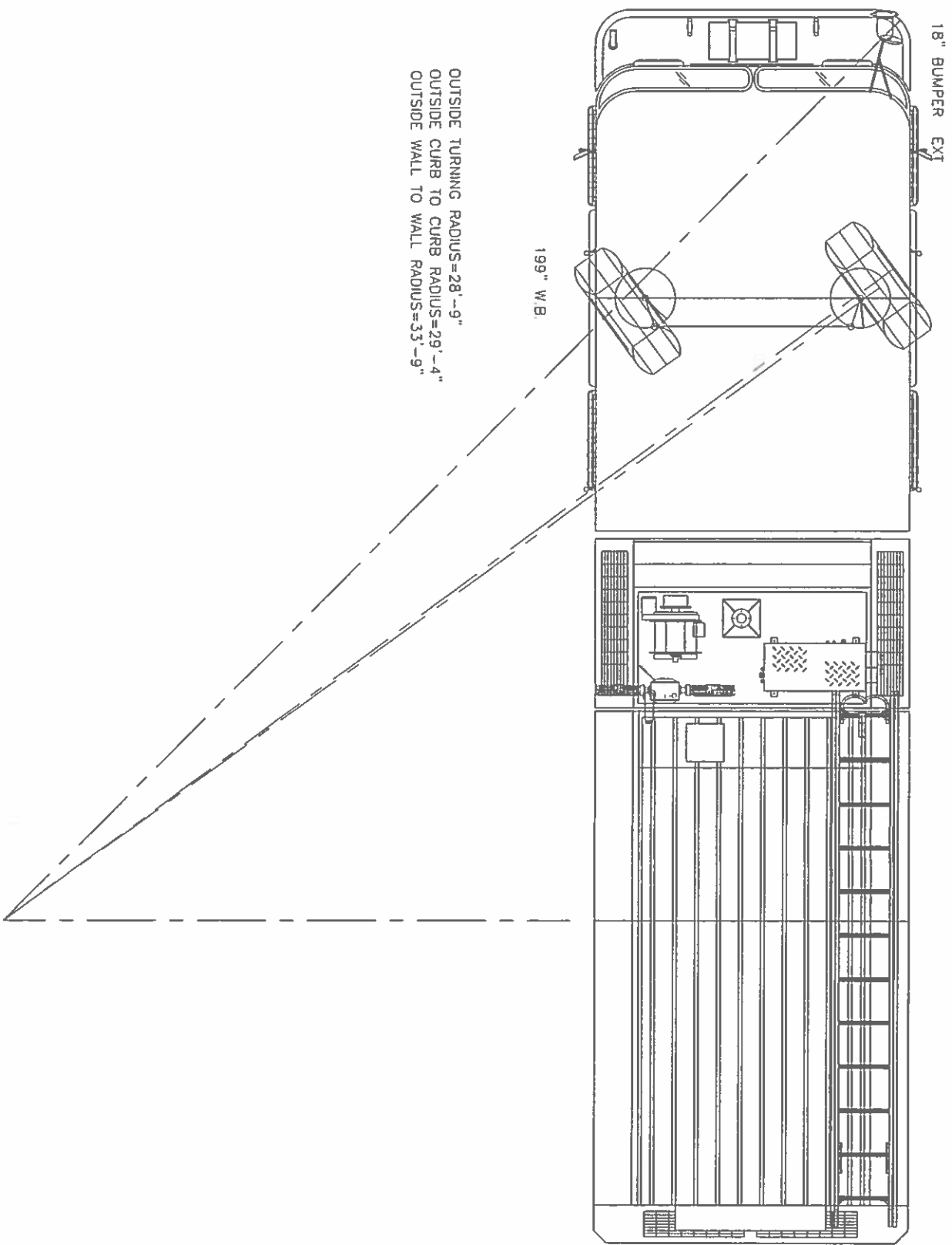
DIMENSIONS ARE APPROXIMATE & MAY VARY DUE TO BUILD ADJUSTMENTS
SCALE: NONE
DWG SIZE: DRAWN BY: JIM
APPROVED BY: JCM
DATE: 14MAR2019

KME CUSTOM PUMPER
VALLEY COTTAGE, NY

QUOTE# 3100



KME
ONE INDUSTRIAL COMPLEX - NESQUEHONING, PA 18240



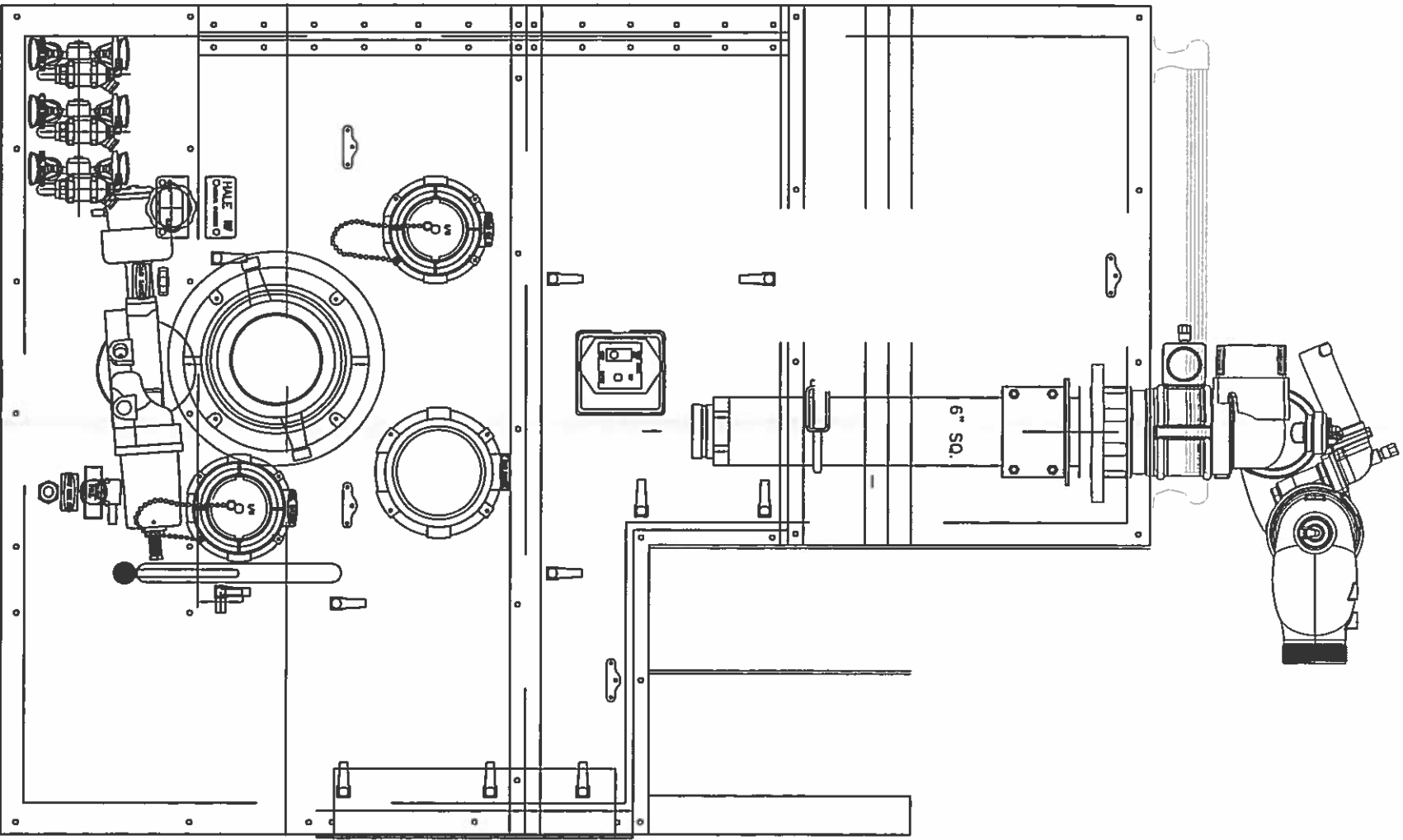
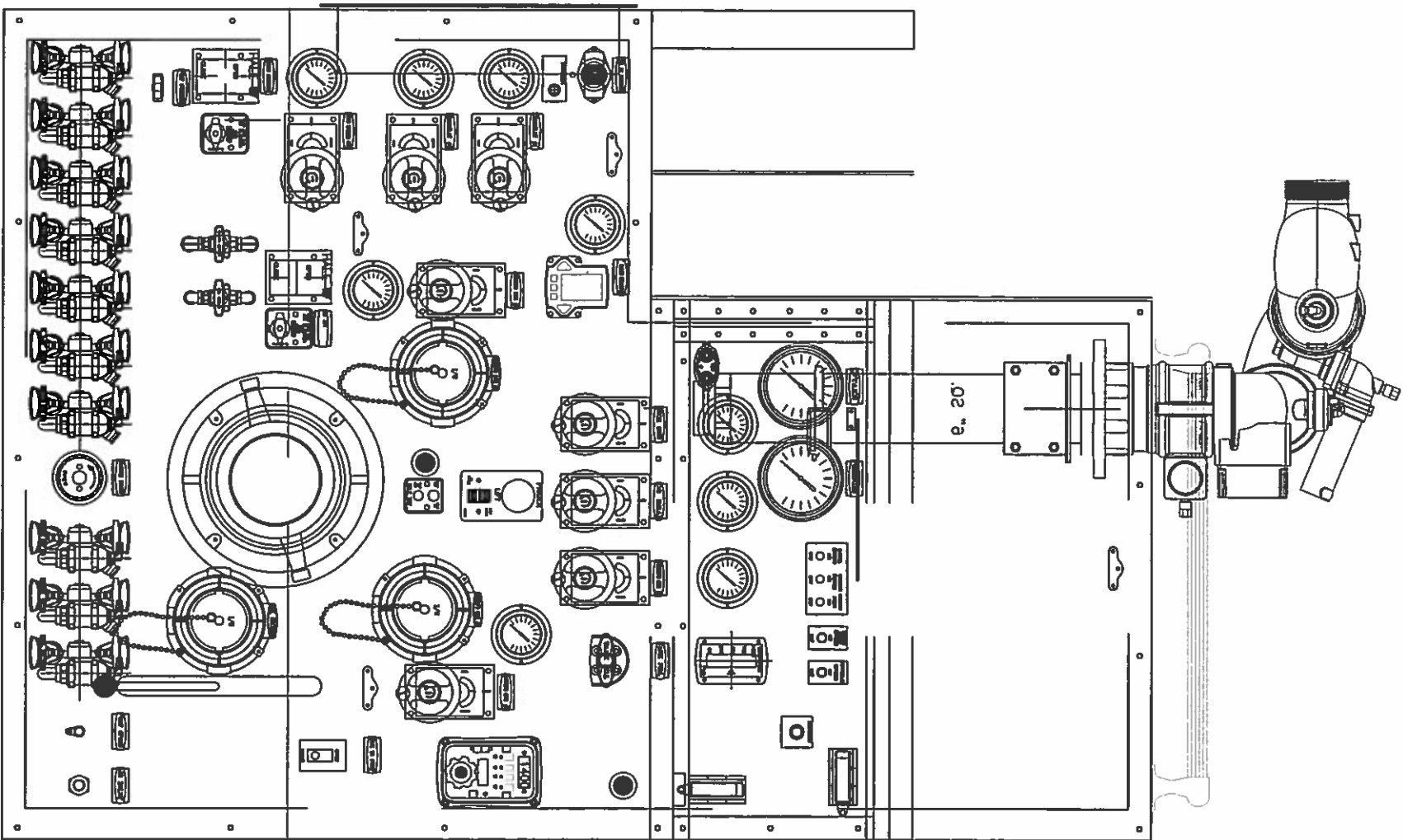
ONE INDUSTRIAL COMPLEX
NESQUEHONING, PA 18240

DATE	SCALE	DRAWN BY	APPROVED BY
3/21/19	NONE	JLM	

TURNING RADIUS FOR

VALLEY COTTAGE, NY

QUOTE# 3100



TOLERANCE UNLESS SPECIFIED
ONE PLACE DECIMAL $\pm .1$
TWO PLACE DECIMAL $\pm .08$
THREE PLACE DECIMAL $\pm .031$
FRACTIONS $\pm 1/16$
ANGLES $\pm 1^\circ$

DESIGNED BY
JCM
DATE DRAWN
03/18/2019

REVISION
-

TITLE
GENERAL PUMP PANEL LAYOUT
PART NUMBER

SHEET
1 OF 1

